

EVENTS

AT

CLUB

CHELSEA



**LONDON'S
MOST
COMPLETE
VENUE**

EVENTS

AT
CLUB

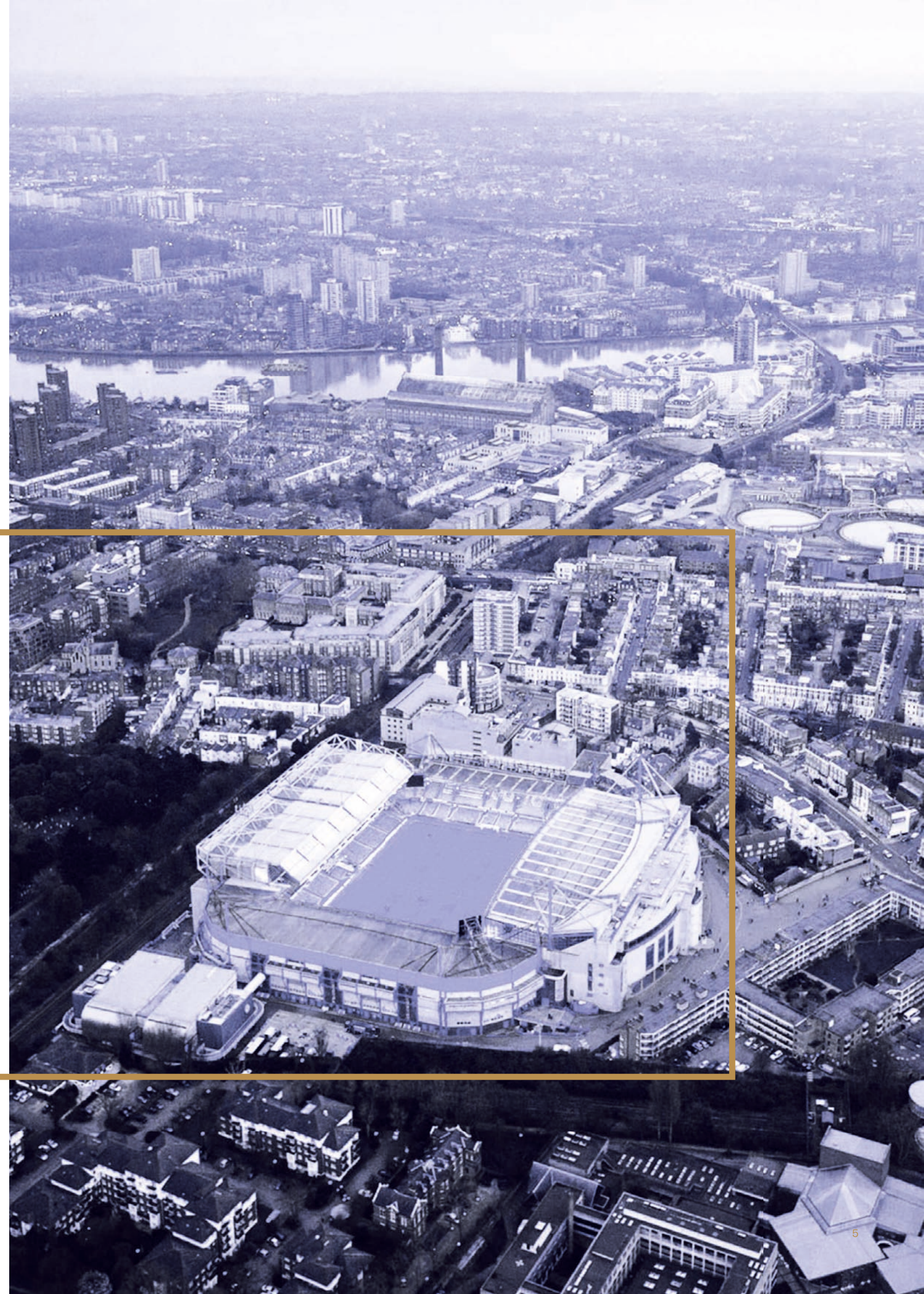
CHELSEA



Chelsea FC's Stamford Bridge offers some of the most versatile meeting, event and conference spaces in London.

Together with our award winning catering partner Levy Restaurants, we offer the ultimate event experience.

Well-appointed suites, panoramic stadium views and 60 syndicate rooms provide the perfect setting for corporate events and private functions. From a small boardroom meeting, to a reception for 1000 guests held in the impressive Great Hall, each space offers an abundance of possibilities.



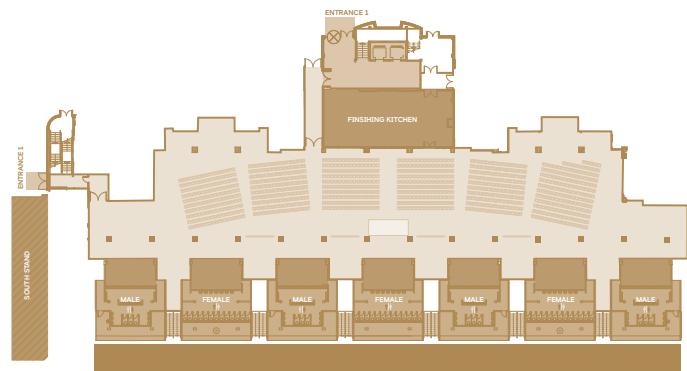
THE GREAT HALL

CONFERENCES

Take advantage of one of London's largest and most versatile function spaces, The Great Hall.

Create an outstanding event, with multiple set-up and AV options to choose from, built-in food and beverage service points and pitch-side terrace access.

| | |
|------------------------|--------------------|
| Area | 1400m ² |
| Ceiling Height | 3.8m – 4.6m |
| L x W | 92m x 12.9m |
| Theatre Style Capacity | 800 |
| Cabaret (8 per table) | 550 |
| Classroom Style | 600 |



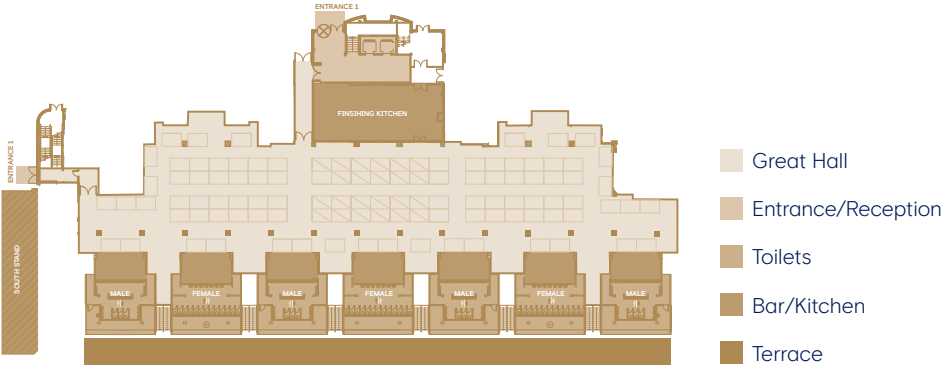
THE GREAT HALL

EXHIBITIONS

We make your large-scale exhibitions effortless, with room for thousands of delegates in one convenient location less than 500m from Fulham Broadway station.

The Great Hall is our largest function room, with ground floor access, high ceilings and 1400m² of load-bearing space – big enough for the most ambitious events and with the added benefit of pitch-side access.

| | |
|----------------|--------------------|
| Area | 1400m ² |
| Ceiling Height | 3.8m – 4.6m |
| L x W | 92m x 12.9m |
| Stand Capacity | 100 stands at 3x2m |



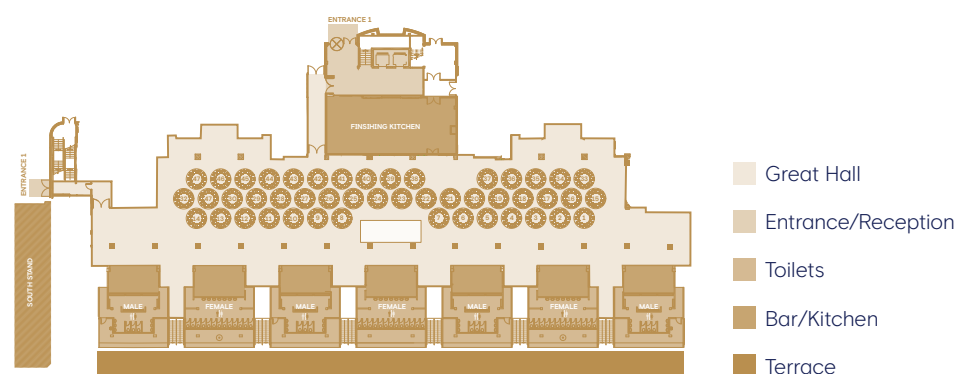
THE GREAT HALL

DINNERS

Make even a large event intimate and timeless, with tailoring options and dining space for up to 650 guests.

As a proud partner of Levy Restaurants UK, we offer award-winning innovative menus and use the finest local produce to create outstanding dining experiences.

| | |
|-----------------------|--------------------|
| Area | 1400m ² |
| Ceiling Height | 3.8m – 4.6m |
| L x W | 92m x 12.9m |
| Dinner Capacity | 650 |
| Dinner Dance Capacity | 600 |
| Reception | 1000 |

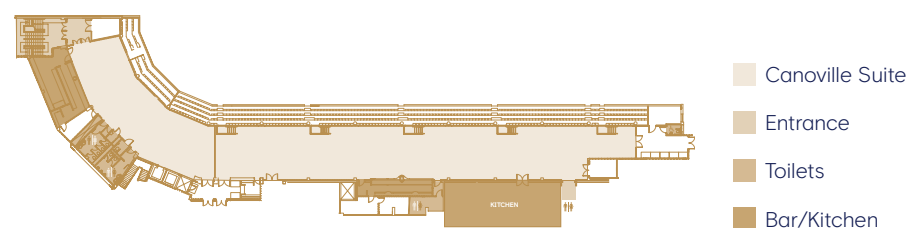


CANOVILLE

SUITE

With outstanding panoramic views of the pitch, our Canoville Suite makes an ideal show-stopping venue for receptions, dinners or special events. With the option to adapt the space in a variety of ways, its practicality makes it one of our most popular rooms.

| | |
|-----------------------|-------------------|
| Area | 729m ² |
| Ceiling Height | 2.7m |
| L x W | 103m x 9.5m |
| Theatre Capacity | 400 |
| Classroom Capacity | 200 |
| Cabaret Capacity | 256 |
| Dinner Capacity | 320 |
| Dinner Dance Capacity | 280 |
| Reception Capacity | 580 |

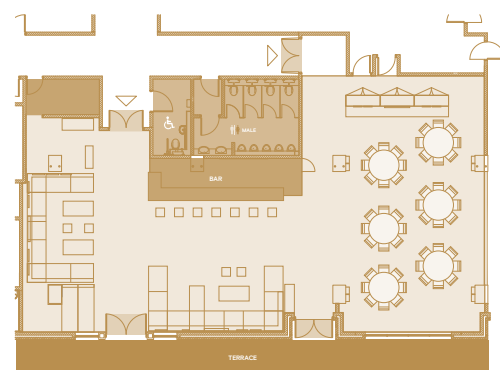


DIRECTORS'

LOUNGE

Our decadent Directors' Lounge is an exclusive event space, perfect for that special dinner or drinks reception. Wine and dine your guests before stepping out onto the Directors' terrace for spectacular views of the pitch.

| | |
|--------------------|-------------------|
| Area | 178m ² |
| Ceiling Height | 2.7m |
| Dinner Capacity | 48 |
| Reception Capacity | 100 |



- Directors' Lounge
- Entrance/Reception
- Toilets
- Bar/Kitchen
- Terrace

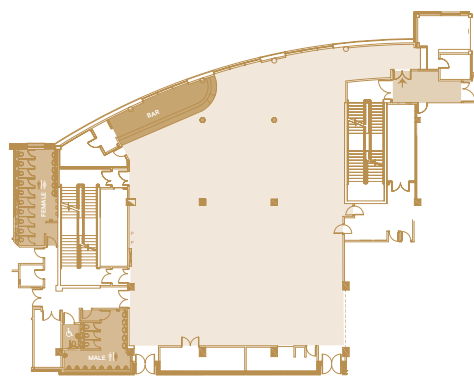


DRAKE & HARRIS

SUITES

Perfectly appointed for events, our Drake and Harris suites benefit from natural daylight, private cloakroom and bathroom facilities. For a breath of fresh air, step outside onto our terraces to break up your meeting.

| | |
|-----------------------|-------------------|
| Area | 495m ² |
| Ceiling Height | 2.5-2.75m |
| L x W | 25m x 19.8m |
| Theatre Capacity | 350 |
| Classroom Capacity | 150 |
| Cabaret Capacity | 180 |
| Dinner Capacity | 270 |
| Dinner Dance Capacity | 200 |
| Reception Capacity | 400 |



- Harris Suite
- Entrance/Reception
- Toilets
- Bar/Kitchen
- Terrace



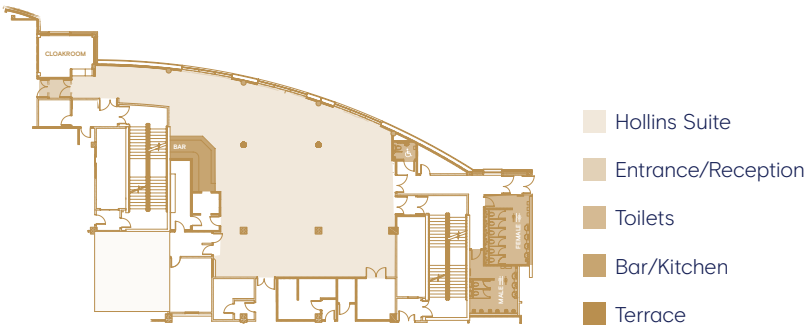
HOLLINS, TAMBLING, BONETTI & CLARKE

SUITES

The Hollins, Tambling, Bonetti & Clarke Suites are identical rooms, perfect for events of up to 150 delegates. They offer convenient and professional spaces and can be used in combination to host workshops and multiple sessions in parallel.

Complete with a cloakroom, bathrooms, free Wi-Fi and natural light, each suite is guaranteed to impress your guests.

| | |
|-----------------------|-------------------|
| Area | 300m ² |
| Ceiling Height | 2.5-2.75m |
| L x W | 12.7m x 16m |
| Theatre Capacity | 150 |
| Classroom Capacity | 90 |
| Boardroom Capacity | 34 |
| U-Shape Capacity | 28 |
| Cabaret Capacity | 100 |
| Dinner Capacity | 120 |
| Dinner Dance Capacity | 100 |
| Reception Capacity | 200 |

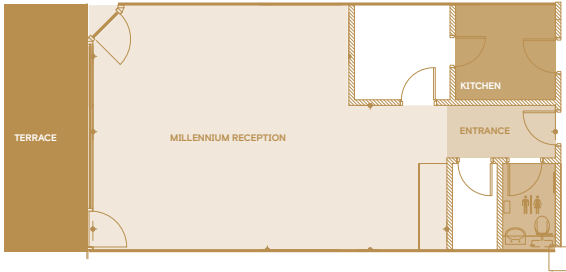


MILLENNIUM

SUITES

Ideal for board meetings, breakout sessions, training and private dinners. Each Millennium suite is equipped with plasma TV's and high speed Wi-Fi, while the terrace balcony provides spectacular pitch views and a welcome space for refreshment breaks.

| | |
|--------------------|---------------------|
| Area | 25-54m ² |
| Ceiling Height | 2.75m |
| Theatre Capacity | 12-30 |
| Boardroom Capacity | 10-20 |
| Dinner Capacity | 10-20 |
| U-shape Capacity | 8-16 |
| Reception Capacity | 16-35 |



VIALLI

SUITE

Ideal for board meetings, training sessions, private dining, seminars and meetings, the Vialli Suite offers fantastic views of the Stamford Bridge pitch to inspire your guests.

Combining a sophisticated interior with contemporary features including two plasma screens our Vialli Suite is the perfect location for your next meeting or event for up to 80 people.

| | |
|--------------------|-------------------|
| Area | 100m ² |
| Ceiling Height | 2.5-2.75m |
| Theatre Capacity | 60 |
| Classroom Capacity | 40 |
| Cabaret Capacity | 40 |
| Dinner Capacity | 50 |
| Reception Capacity | 80 |



EXECUTIVE

BOXES

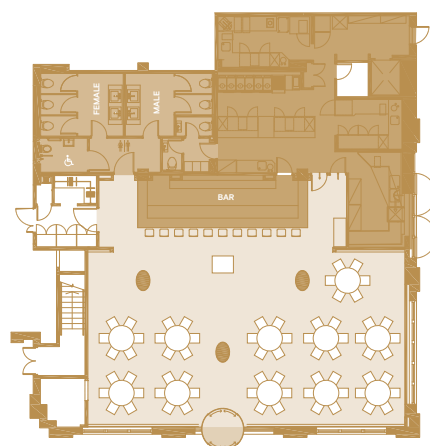
Enjoying some of the greatest views of the Stamford Bridge pitch, our executive boxes are guaranteed to create a meeting to remember. The boxes are ideal for breakout sessions, board meetings and interview rooms. All boxes include a plasma screen, Wi-Fi and access to your own personal terrace in the stadium.

| | |
|--------------------|---------------------|
| Area | 10-22m ² |
| Ceiling Height | 2.5m |
| Dinner Capacity | 10-16 |
| Boardroom Capacity | 8-16 |



THE 1905

CLUB



- 1905 Club
- Entrance/Reception
- Toilets
- Bar/Kitchen

This sought-after space pays homage to the evolution of the stadium over the years since Chelsea made it its home in 1905. It offers an exclusive space for up to 100 guests to have an exceptional dining experience. With a private bar facility, natural daylight, free WiFi, cloakroom and bathrooms and is fully accessible.

| | |
|--------------------|-------------------|
| Area | 120m ² |
| Ceiling Height | 2.6-2.9m |
| Theatre Capacity | 64 |
| Boardroom Capacity | 28 |
| U-shape Capacity | 24 |
| Dinner Capacity | 80 |
| Reception Capacity | 120 |



CANALETTO'S

Treat your guests to a very different private dining experience. Canaletto's offers a truly unique reception and dining experience for up to 160 guests to enjoy. The Venetian styled restaurant is adorned with rich wood panelling, cut glass chandeliers and Italian marble.

| | |
|-----------------------|-------------------|
| Area | 415m ² |
| Ceiling Height | 2.4m |
| L x W | 38.4m x 10.8m |
| Dinner Capacity | 160 |
| Dinner Dance Capacity | 120 |
| Reception Capacity | 160 |

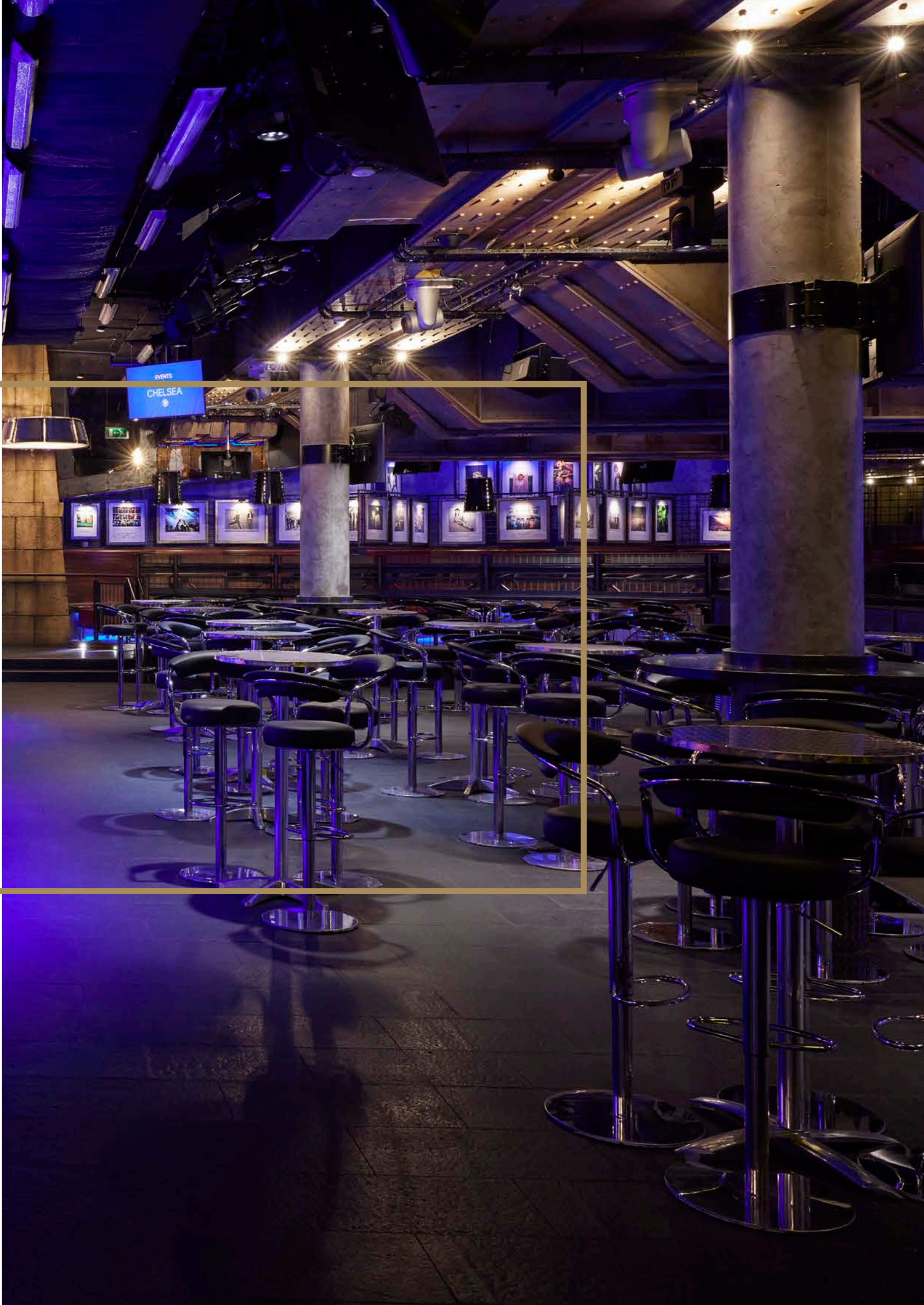
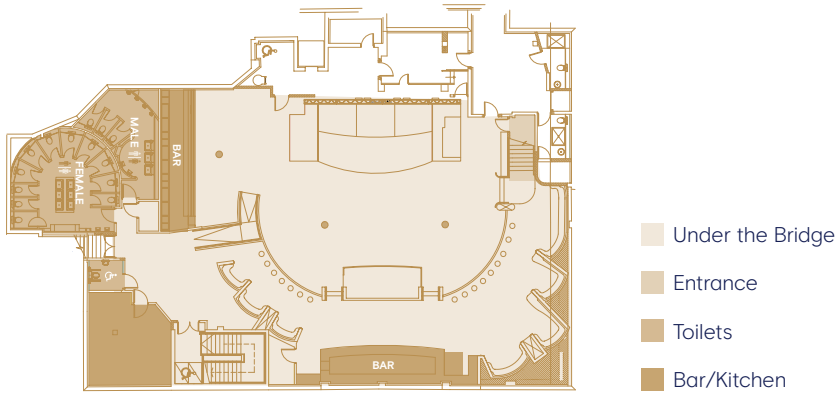


UNDER THE BRIDGE

A firm favourite for sports lovers and music fans, Under the Bridge offers a unique venue that's synonymous with the stadium.

Fitted with a stage, state-of-the-art LED screen and production equipment, UTB has hosted countless high-profile music artists and functions over the years. The private bar, kitchen, cloak room, seating booths and dance floor space, will suit an array of functions.

| | |
|--------------------|-------------------|
| Area | 360m ² |
| Ceiling Height | 2.4m |
| L x W | 25m x 18m |
| Theatre Capacity | 150 |
| Cabaret Capacity | 80 |
| Dinner Capacity | 80 |
| Reception Capacity | 550 |





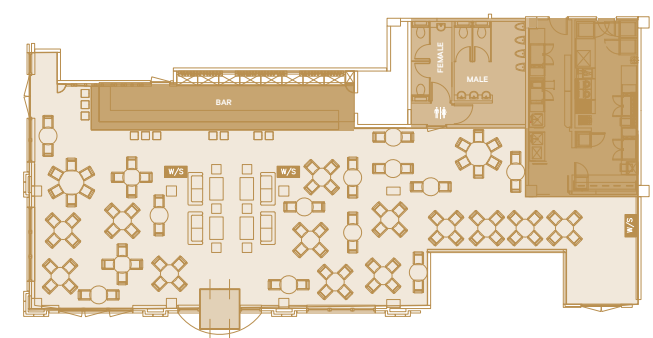
FRANKIE'S

SPORTS BAR & GRILL

Frankie's Sports Bar and Grill offers something for everyone including all televised live sport on 16 large screens and is also available for private hire.

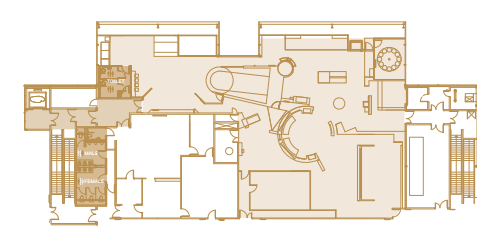
Whatever your event may be, Frankie's has it all. Offering a lively, vibrant atmosphere, Frankie's is a versatile venue that creates the perfect surroundings for your celebration, with a selection of dining options and space for a DJ, band or entertainment of your choice.

| | |
|--------------------|-------------------|
| Area | 168m ² |
| Ceiling Height | 2.4m - 2.9m |
| L x W | 21.8m x 7.9m |
| Dinner Capacity | 200 |
| Reception Capacity | 200 |



- Frankie's
- Entrance
- Toilets
- Bar/Kitchen

STADIUM TOURS & MUSEUM



Relive Chelsea's past and present with a stadium tour as part of your meeting or event.

The Chelsea FC museum is a great space for an alternative drinks reception sure to be a talking point among your guests.

- Museum
- Entrance
- Toilets

| | |
|--------------------|-------------------|
| Area | 180m ² |
| Ceiling Height | 2.8-5m |
| Reception Capacity | 180 |



MILLENNIUM & COPTHORNE

HOTELS

Located on-site at Stamford Bridge, the Millennium & Copthorne Hotels provide a perfect retreat at the end of the day. The 4-star Hotels offer a total of 231 guest rooms.

Our hotels have all of the modern amenities to ensure your guests feel relaxed and at home at all times.



SUITES

AT STAMFORD BRIDGE

| Capacities | Theatre | Boardroom | U-Shape | Classroom | Cabaret | Dinner | Dinner/ Dance | Reception |
|----------------------------|---------|-----------|---------|-----------|---------|--------|------------------|-----------|
| West Stand | | | | | | | | |
| Great Hall | 800 | - | - | 600 | 550 | 650 | 600 | 1000 |
| Hollins Suite | 150 | 34 | 28 | 90 | 100 | 120 | 100 | 200 |
| Tambling Suite | 150 | 34 | 28 | 90 | 100 | 120 | 100 | 200 |
| West Stand Exec Boxes | - | 8-16 | - | - | - | - | 8-16 | - |
| Drake Suite | 350 | 50 | 46 | 150 | 180 | 270 | 200 | 400 |
| Vialli Suite | 60 | 30 | 26 | 40 | 40 | 50 | - | 80 |
| Harris Suite | 350 | 50 | 46 | 150 | 180 | 270 | 200 | 400 |
| Bonetti Suite | 150 | 34 | 28 | 90 | 100 | 120 | 100 | 200 |
| Clarke Suite | 150 | 34 | 28 | 90 | 100 | 120 | 100 | 200 |
| Millennium Suite | 12-30 | 10-20 | 8-16 | - | - | 10-20 | - | 16-35 |
| Director's Lounge | - | - | - | - | - | 48 | - | 100 |
| South Stand | | | | | | | | |
| Canoville Suite | 400 | - | - | 200 | 256 | 320 | 280 | 580 |
| Frankie's | - | - | - | - | - | 200 | * | 200 |
| 1905 Club | 64 | 28 | 24 | 45 | 40 | 80 | 60 | 120 |
| East Stand | | | | | | | | |
| Under the Bridge | 150 | - | - | - | 80 | 80 | - | 550 |
| Champions' Club 1 | 180 | - | - | - | - | - | - | 400 |
| Executive Club Lower | 150 | - | - | 60 | 80 | 200 | 180 | 350 |
| Executive Club Upper | 150 | - | - | 60 | 60 | 200 | 100 | 200 |
| East Stand Executive Boxes | - | 4-16 | - | - | - | 4-16 | - | - |
| Canalettos | - | - | - | - | - | 160 | 120 | 160 |

* Subject to layout

BOOK
YOUR
EVENT
NOW

EVENTS@CHELSEA.COM
+44 (0) 371 811 1955
EVENTS.CHELSEAFC.COM

STAMFORD BRIDGE,
FULHAM ROAD,
LONDON SW6 1HS

